

Mechanism Differences

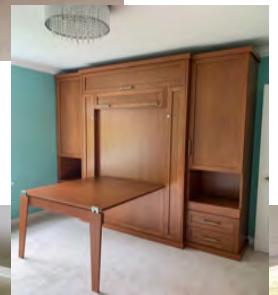
The Standard Mechanism

- Designed for guest use.
- Manual, flip down leg holds mattress in place.
- Uses up to a 9" mattress.
- Standard size from single to queen.
- Metal frame with 13" legs
- Mattress sits on the back of the back panels.
- Have to remove some bedding before closing.
- Synchronized desk (Optional)
- 5 year warranty.



Deluxe Easy-Lift Mechanism Studio 2000

- Designed for frequent use
- No Legs, bed rests on the crown moulding
- Uses up to a 9" mattress.
- Standard size from single to king.
- Mattress sits on a European slat system.
- Moving headboard allows bedding to stay in place.
- Counterbalanced, tension-adjustable mechanism,
- Has a drop down table option.
- 30 year warranty



Deluxe Easy-Lift Mechanism Auto Leg

- Designed for frequent use
- Automatic leg that folds up & down with the bed
- Bed sits at a standard bed height
- Uses up to a 9" mattress.
- Standard size from single to king.
- Mattress sits on a European slat system.
- Moving headboard allows bedding to stay in place.
- Counterbalanced, tension-adjustable mechanism.
- Has a drop down table option.
- 30 year warranty



CIELO- SOFA BED MECHANISM WITH CONCEALED AUTOMATIC LEGS



Description

The foldaway Cielo sofa bed mechanism is multitasker: by day a comfortable sofa and by night a cozy bed. It is equipped with a SINGLE-MOVEMENT open-and-close feature, the only one of its kind on the market!

Advantages

- The leg and the sofa back are synchronized to move with the bed itself
- Single movement opening and closing
- Static load rating: 1322 Lb. (600 Kg)
- Matte nickel finish



The dimensions shown in the drawings are the overall dimensions.

To order

- Bed size
- Double bed
- Queen bed

